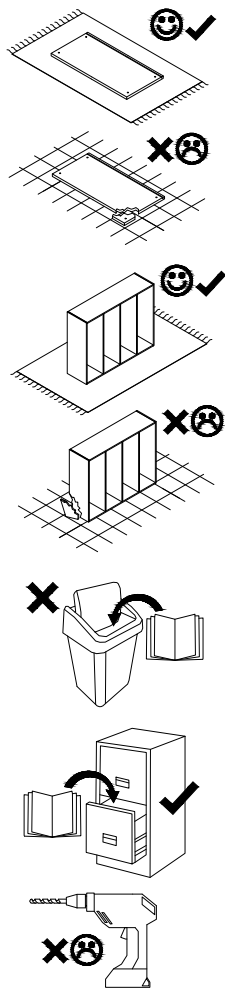
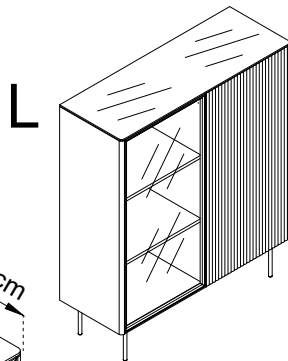
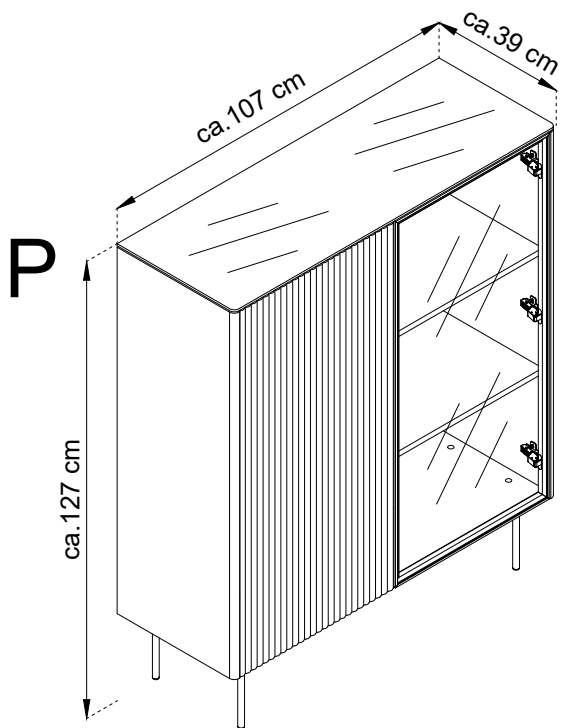


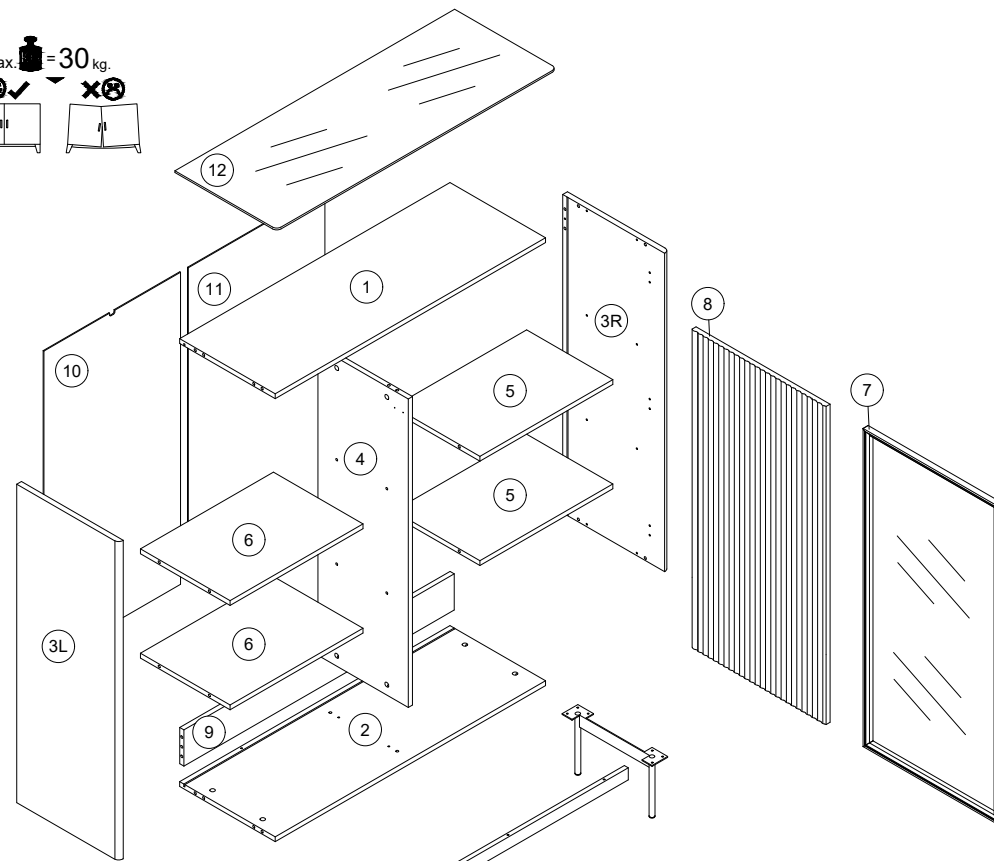
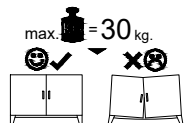
ORTA WT 107



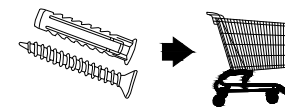
- (D) Montageanleitung
- (GB) Assembly Instructions
- (FR) Notice de montage
- (IT) Istruzioni di montaggio
- (NL) Handleiding voor de montage
- (PL) Instrukcja montażu
- (CZ) Montážní návod
- (SK) Návod na montáž
- (HU) Szerelési útmutató
- (RO) Instrucțiuni de montaj
- (TR) Montaj talimatı
- (RU) Инструкции по монтажу
- (E) Instrucciones de montaje

PIASKI
SINCE 1989

Fabryka Mebli PIASKI Henryk Kaczorowski sp. z o.o.
PIASKI 1C, 63-645 Łęka Opatowska
gpsr@piaski.com.pl



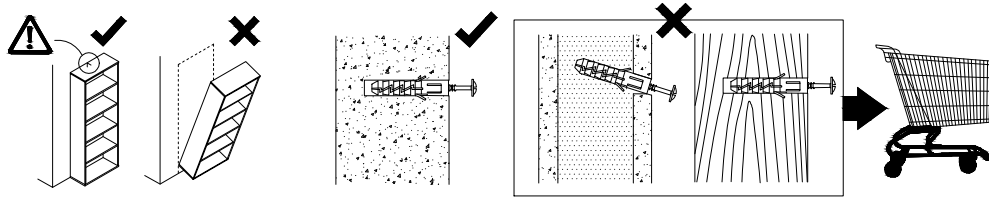
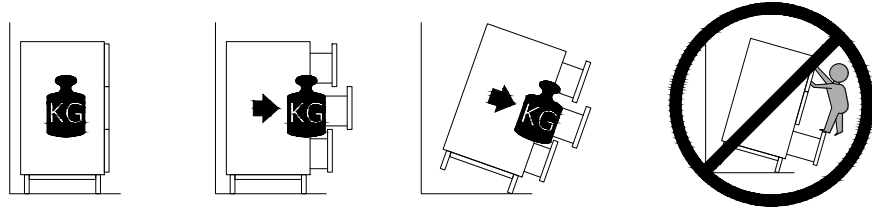
| | | | | | |
|-----|------|----------|------------|-----------|----|
| A | 8x32 | ZC | | | |
| | x16 | | x11 | | |
| B | WH | WHR | H0 R BLACK | H0 | |
| | x22 | x3 | x3 | x3 | x3 |
| C | SL | WR | NS 3.5x13 | W 4x60 | |
| | x30 | x6 | x6 | x10 | x2 |
| WTY | LED | N 3x20 | KG TITUS | TA | |
| | x1 | x2 | x11 | x2 | x1 |
| X | B1 | Z CZARNA | Z KASZMIR | ND 3.5x16 | |
| | x16 | x4 | x4 | x24 | x1 |



| | | NOGI + WKRETY | | | | 1 / 1 |
|-------|------|---------------|---------|----|-------|-------|
| 1 | 1035 | 366 | 16 | x1 | 2 / 3 | |
| 2 | 1035 | 366 | 16 | x1 | 2 / 3 | |
| 3L 3R | 1056 | 390 | 18 | x2 | 2 / 3 | |
| 4 | 1023 | 346 | 16 | x1 | 2 / 3 | |
| 5 | 509 | 330 | 16 | x2 | 3 / 3 | |
| 6 | 509 | 343 | 16 | x2 | 3 / 3 | |
| 7 | 1055 | 513 | 18/20.5 | x1 | 3 / 3 | |
| 8 | 1055 | 513 | 18 | x1 | 3 / 3 | |
| 9 | 1035 | 120 | 16 | x1 | 3 / 3 | |
| 10 | 1035 | 523 | 2.5 | x1 | 3 / 3 | |
| 11 | 1035 | 523 | 2.5 | x1 | 3 / 3 | |
| 12 | 1071 | 390 | 6 | x1 | 2 / 3 | |

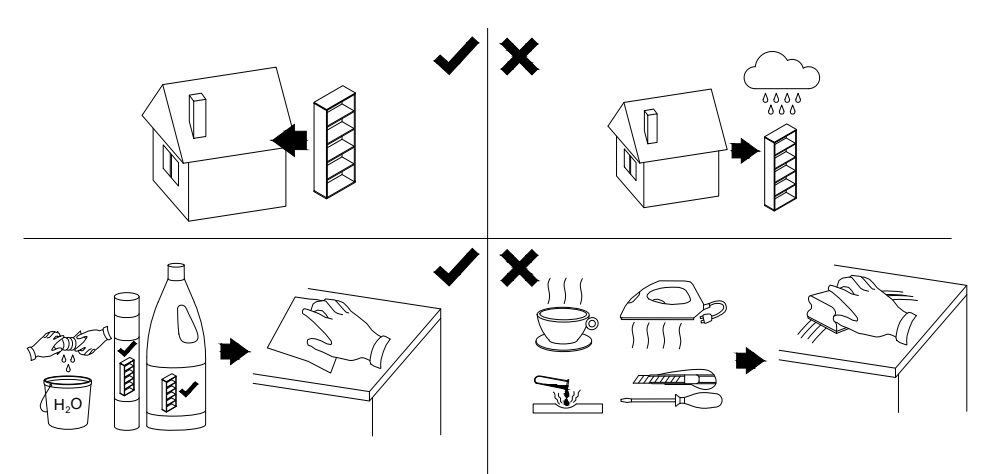
10.12.2024

! Uwaga • Upozornění • Achtung • Attention • Caution • Figyelem
 Attenzione • Opgelet • Внимание • Atenție • Upozornenie • Dikkat !



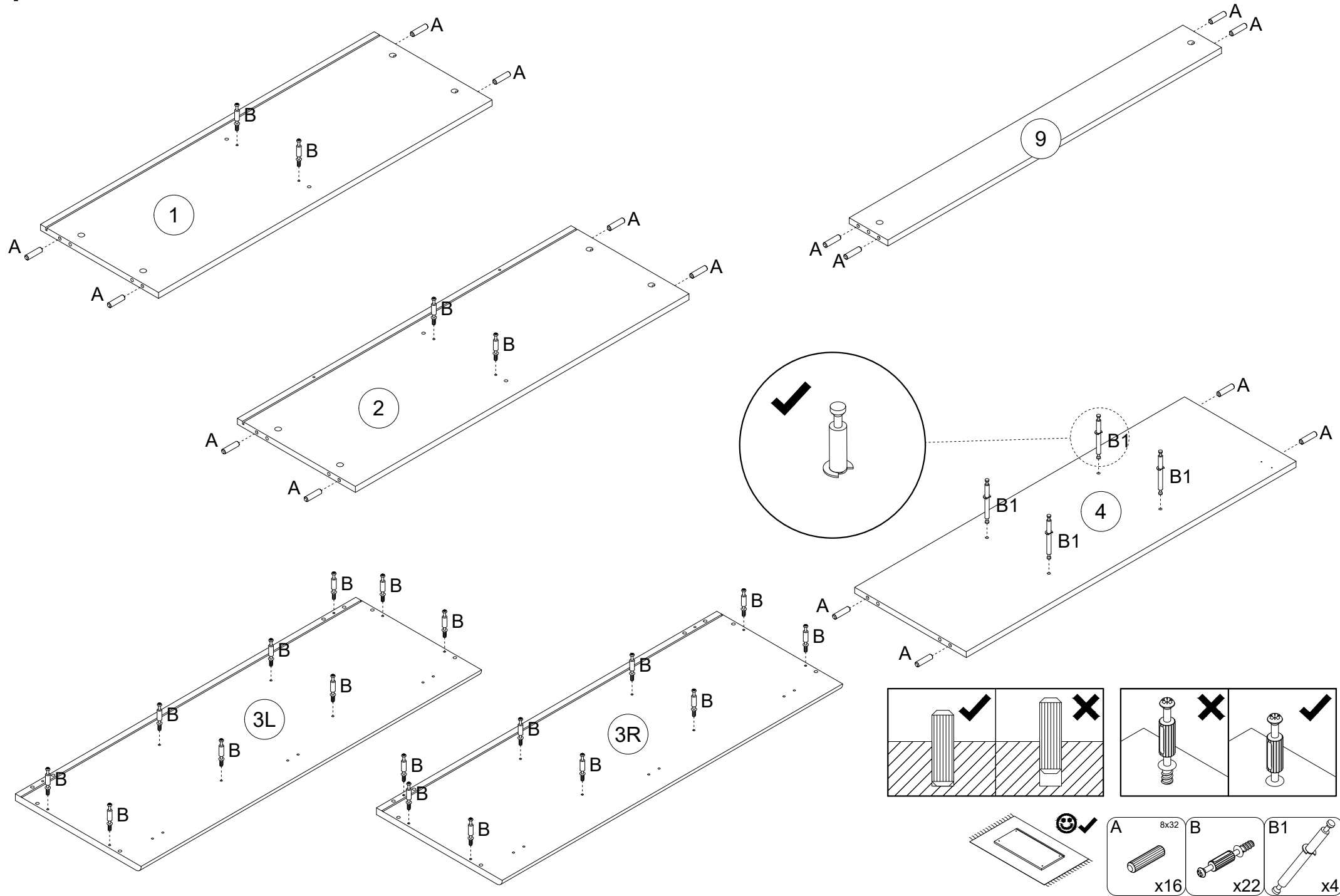
| | |
|----|--|
| PL | Mocowanie do ściany jest jednocześnie zabezpieczeniem przed przewróceniem - koniecznie zamontować! Do niektórych rodzajów ścian koniecznie zastosować specjalne kołki mocujące. |
| CZ | Montáž na stěnu slouží jako ochrana proti převrnutí - bezpodmínečně umístěte! U některých typů stěn může být zapotřebí speciální hmoždinka! |
| DE | Wandbefestigung dient als Kippschutz - unbedingt anbringen! bei einigen Wandtypen kann ein Spezialdübel erforderlich sein! |
| GB | The wall fastening serves to prevent tipping - be absolutely sure to mount it! For certain wall types, a special wall plug may be necessary! |
| FR | La fixation murale sert de protection contre le basculement - à installer impérativement! Pour certains types de murs il faut des chevilles spéciales! |
| NL | De muurbevestiging is ook een anti-kantelbeveiliging - moet worden gemonteerd! Voor bepaalde soorten muren is het nodig speciale bevestigingspluggen te gebruiken. |
| IT | Il fissaggio alla parete serve da protezione anti-ribaltamento-attaccarla assolutamente! Per alcune strutture di parete può essere necessario un tassello speciale! |
| HU | A termékét a falhoz kel rögzíteni, különben az felborulhat! Egyes fal típusoknál speciális tiplőt kell használni! |
| RU | Обязательно установите крепление на стене во избежание опрокидывания! Для некоторых типов стен может потребоваться специальный дюбель! |
| RO | Sistemul de fixare la perete servește ca protecție la răsturnare - de montat obligatoriu! Pentru unele tipuri de pereți este posibil să fie necesar un diblu special! |
| SK | Upevnenie na stenu slúži ako ochrana proti prevráteniu - bezpodmienečne použite! Pre niektoré druhy stein môže byť potrebná špeciálna hmoždinka! |
| TR | Duvardaki sabitleme, devrilmeye karşı bir emniyet tedbiridir ve mutlaka monte edilmelidir! Bazı duvar tiplerinde bunun için özel bir dübel gerekli olabilir! |
| E | Fijarlo a la pared también protege contra vuelcos. ¡Asegúrese de instalarlo! Para algunos tipos de paredes, es necesario utilizar pasadores de montaje especiales. |

! Uwaga • Upozornění • Achtung • Attention • Caution • Figyelem
 Attenzione • Opgelet • Внимание • Atenție • Upozornenie • Dikkat !

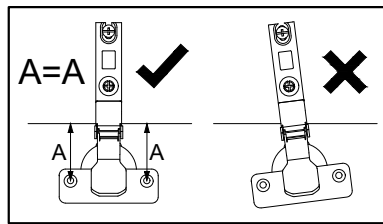


| | |
|----|---|
| PL | Czyszczenie należy wykonać wyłącznie za pomocą ściereczki lub lekko nawilżonego ręcznika. Nie stosować środków czyszczących do szorowania. |
| CZ | Čištění je nutné vykonávat výhradně pomocí utěrky nebo lehce navlženého ručníku. Nepoužívejte čisticí prostředky obsahující abrazivní částice. |
| DE | Bitte nur mit einem Staubtuch oder leicht feuchtem Lappen reinigen. Keine scheuernden Putzmittel verwenden. |
| GB | Please only clean with a duster or damp cloth. Do not use any abrasive cleaners. |
| FR | Le nettoyage se fait uniquement à l'aide d'un torchon ou d'une serviette légèrement mouillée. |
| NL | Reinigen met een zachte doek of een licht vochtige doek. Geen schurende middelen gebruiken. |
| IT | Pulire esclusivamente con un panno o un asciugamano umido. |
| HU | A tisztítás kizárólag törölrőruha vagy enyhén nedvesített törölköző segítségével végezhető. Súroló hatású tisztítószereket nem szabad használni. |
| RU | Очищайте от пыли тряпкой или слегка влажной ветошью. Не допускается применение чистящих средств, не предназначенных для ухода за мебелью. |
| RO | Curățarea trebuie efectuată numai cu o cârpă sau cu un prosop ușor umezit. Nu utilizați agenți de curățare abrazivi. |
| SK | Čistení je nutné vykonávať výhradne pomocí utierky alebo ľahko zvlhnutým ručníkom. Nepoužívajte čistiaci prostriedky obsahujúci abrazívni častice. |
| TR | Lütfen sadece bir toz bezilye veya hafif nemli yumuşak bir bezle siliniz. Aşındırıcı temizlik malzemeleri kullanmayınız. |
| E | La limpieza debe realizarse únicamente con un paño o una toalla ligeramente humedecida. No utilizar productos de limpieza abrasivos |

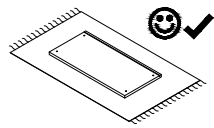
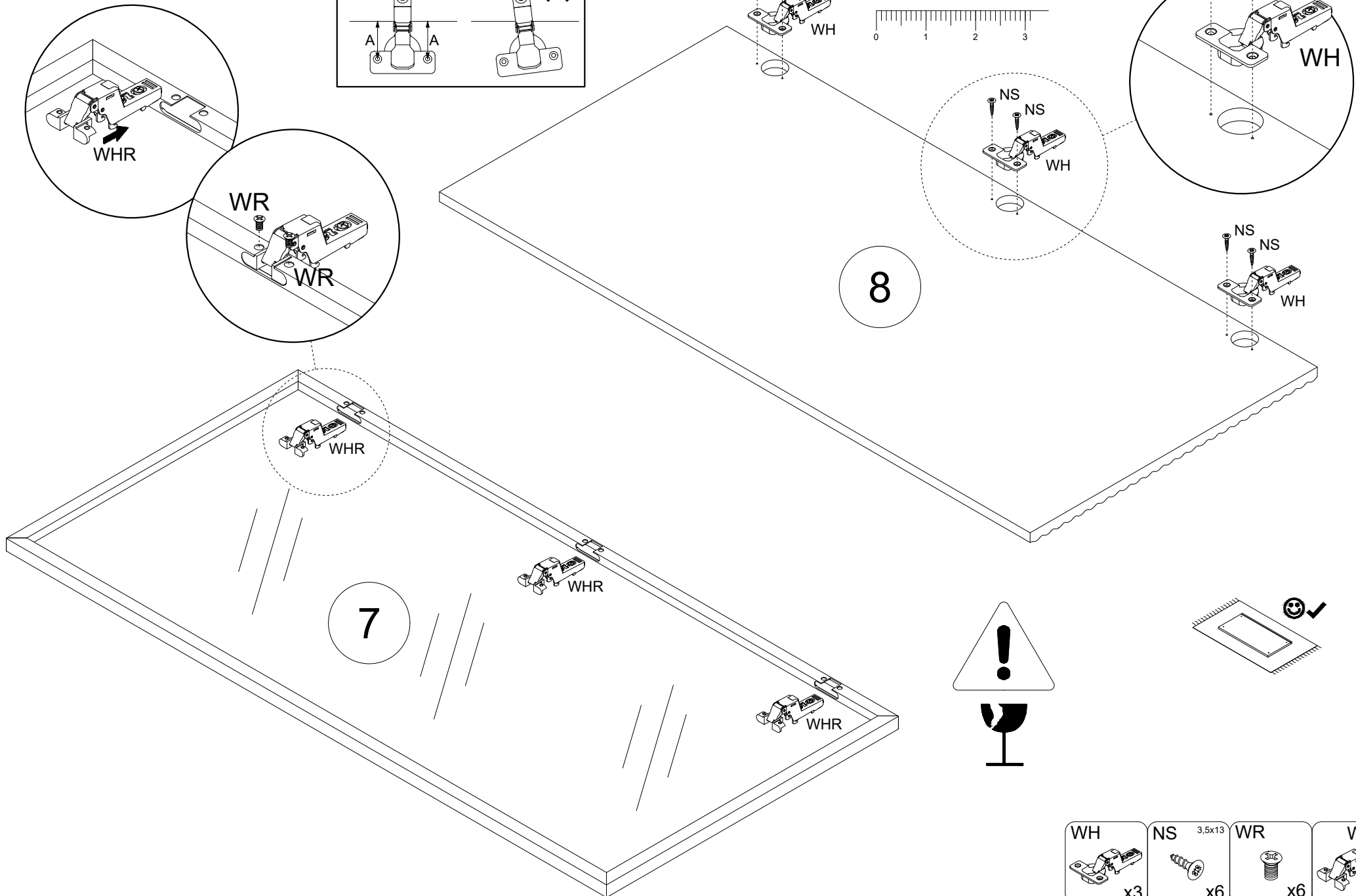
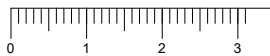
1



2

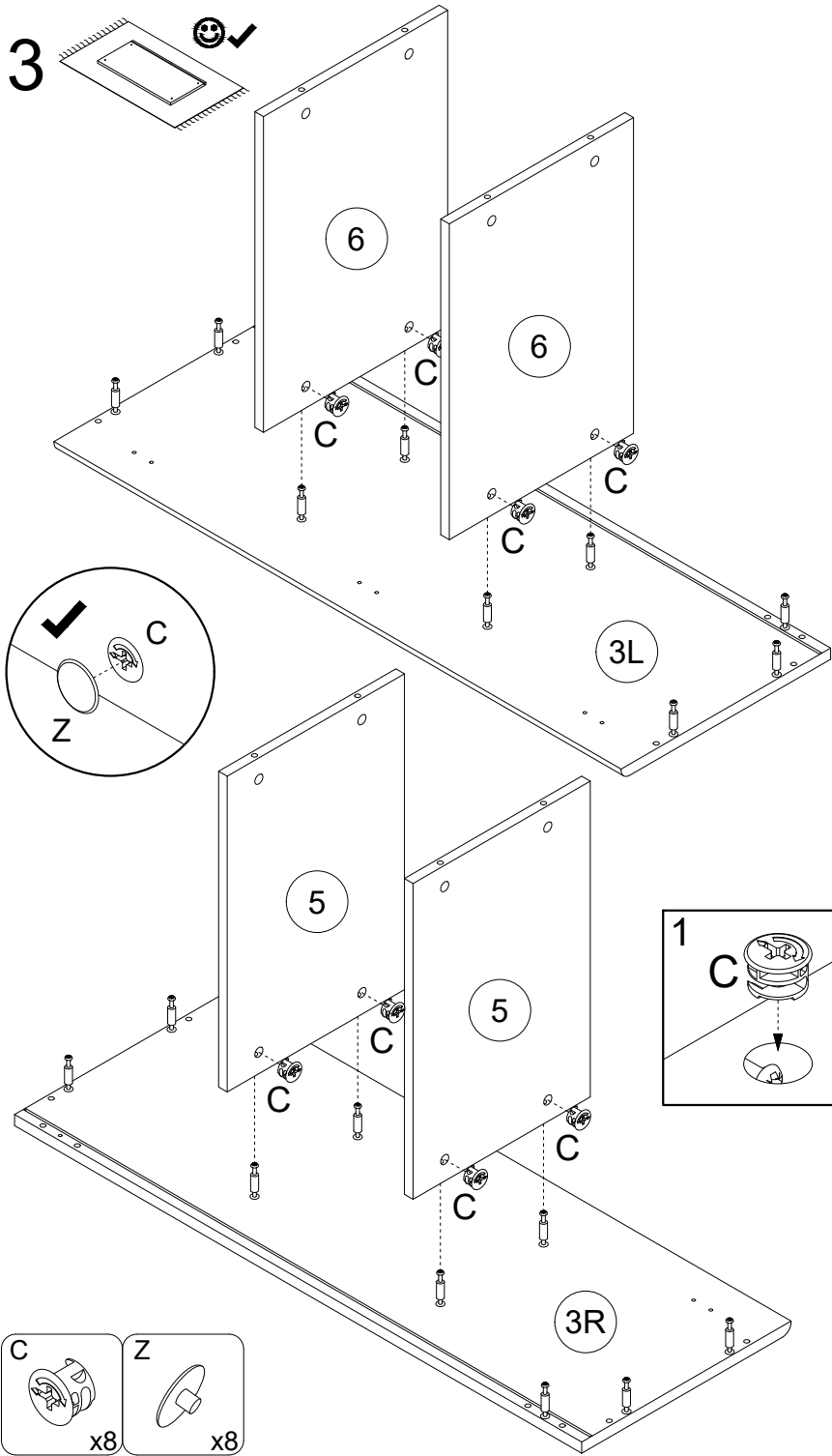


| | | | |
|----|--|--|-----|
| NS | | | 1:1 |
|----|--|--|-----|

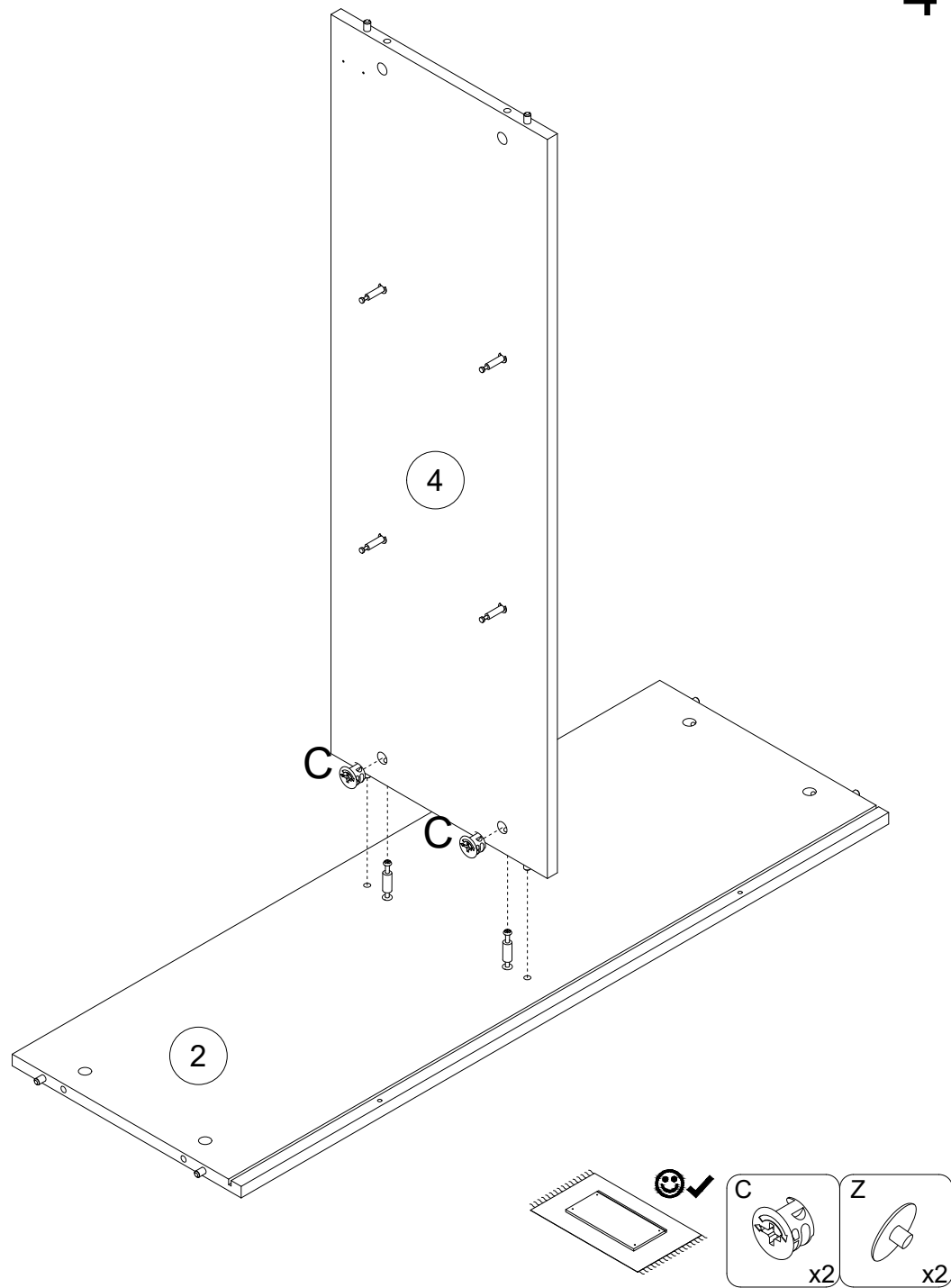


| | | | |
|--------------|---------------------|--------------|---------------|
| WH x3 | NS 3,5x13 x6 | WR x6 | WHR x3 |
|--------------|---------------------|--------------|---------------|

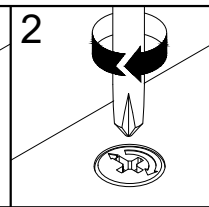
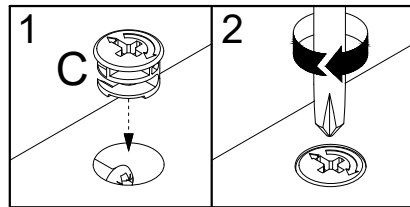
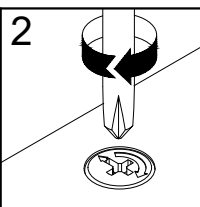
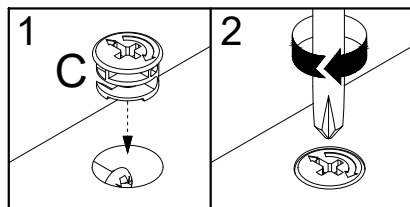
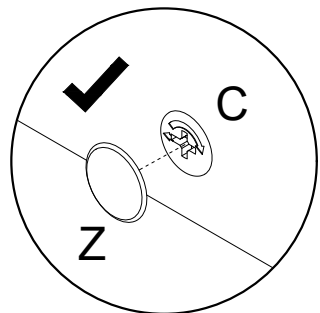
3



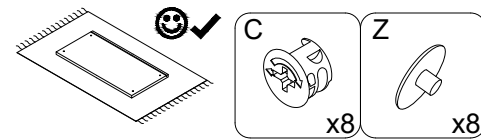
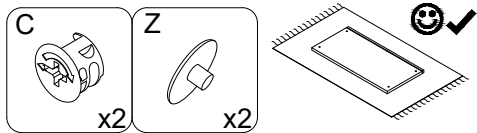
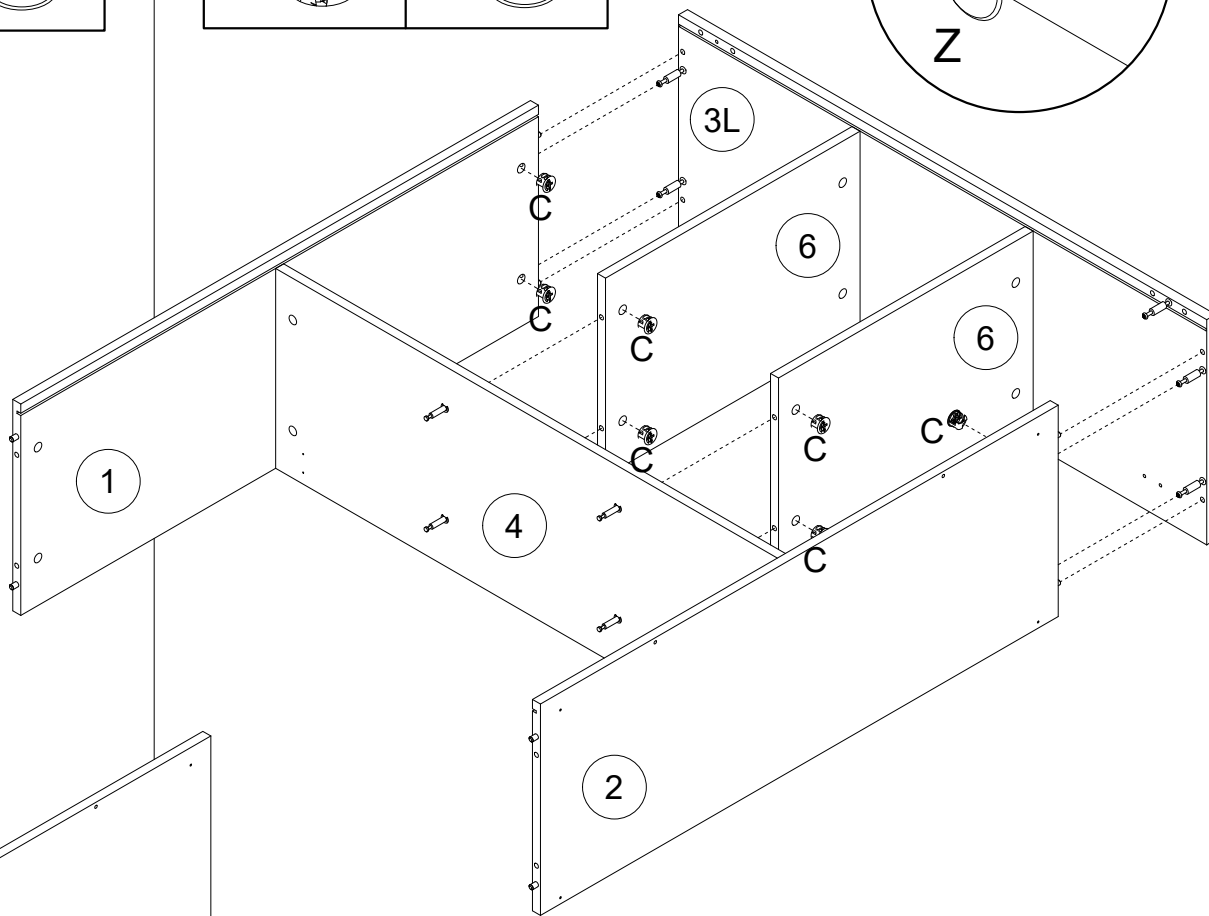
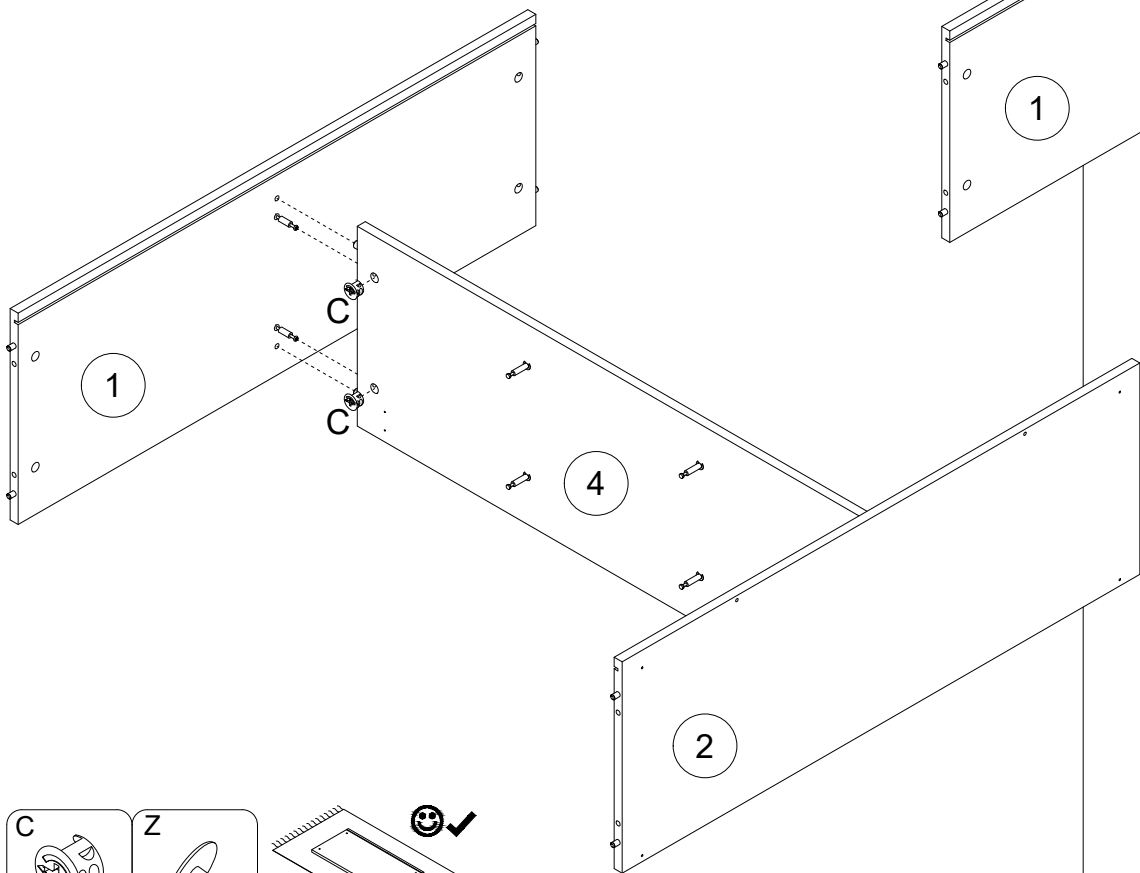
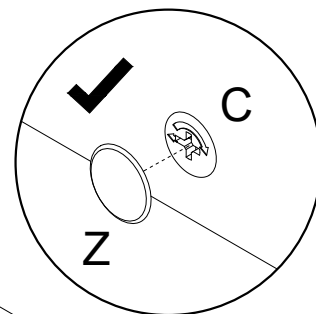
4



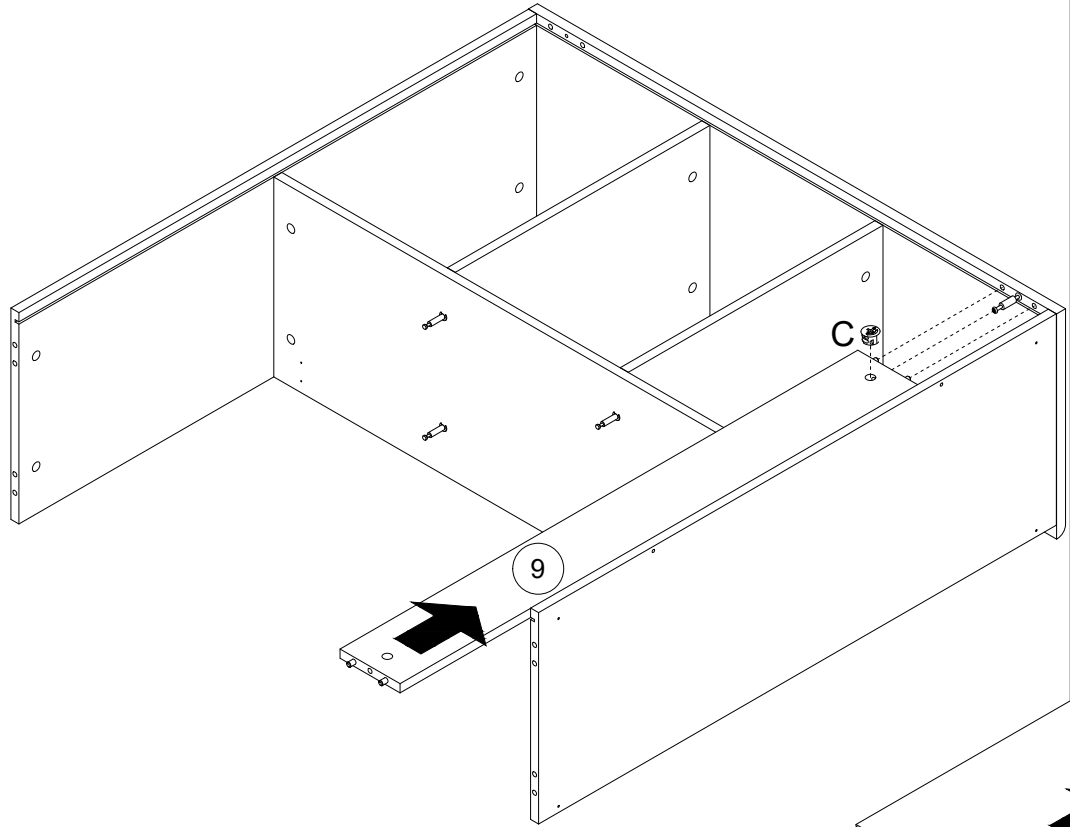
5



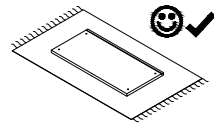
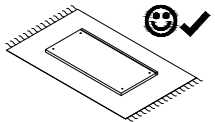
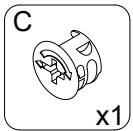
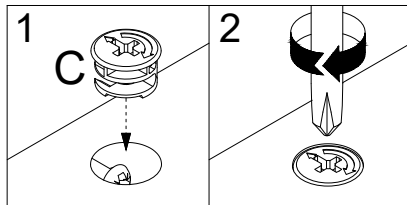
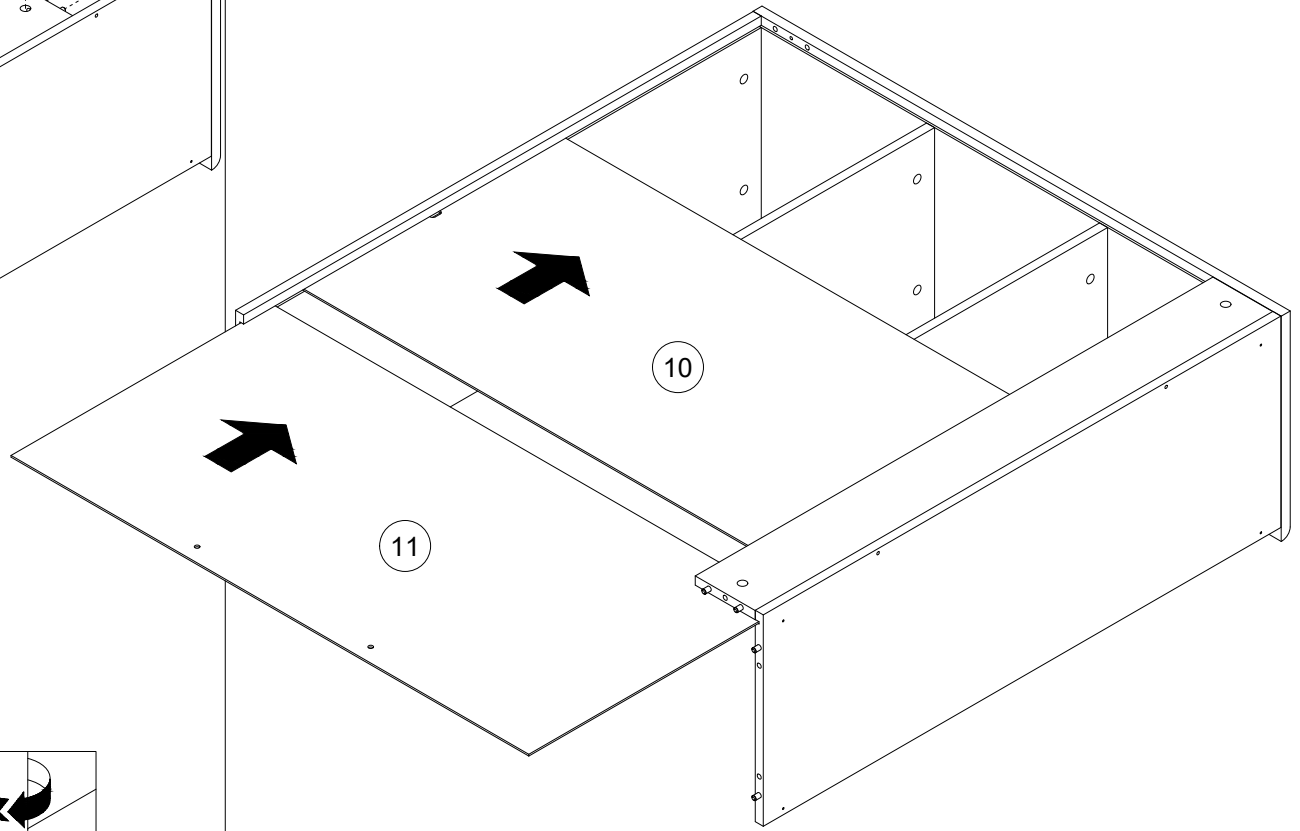
6



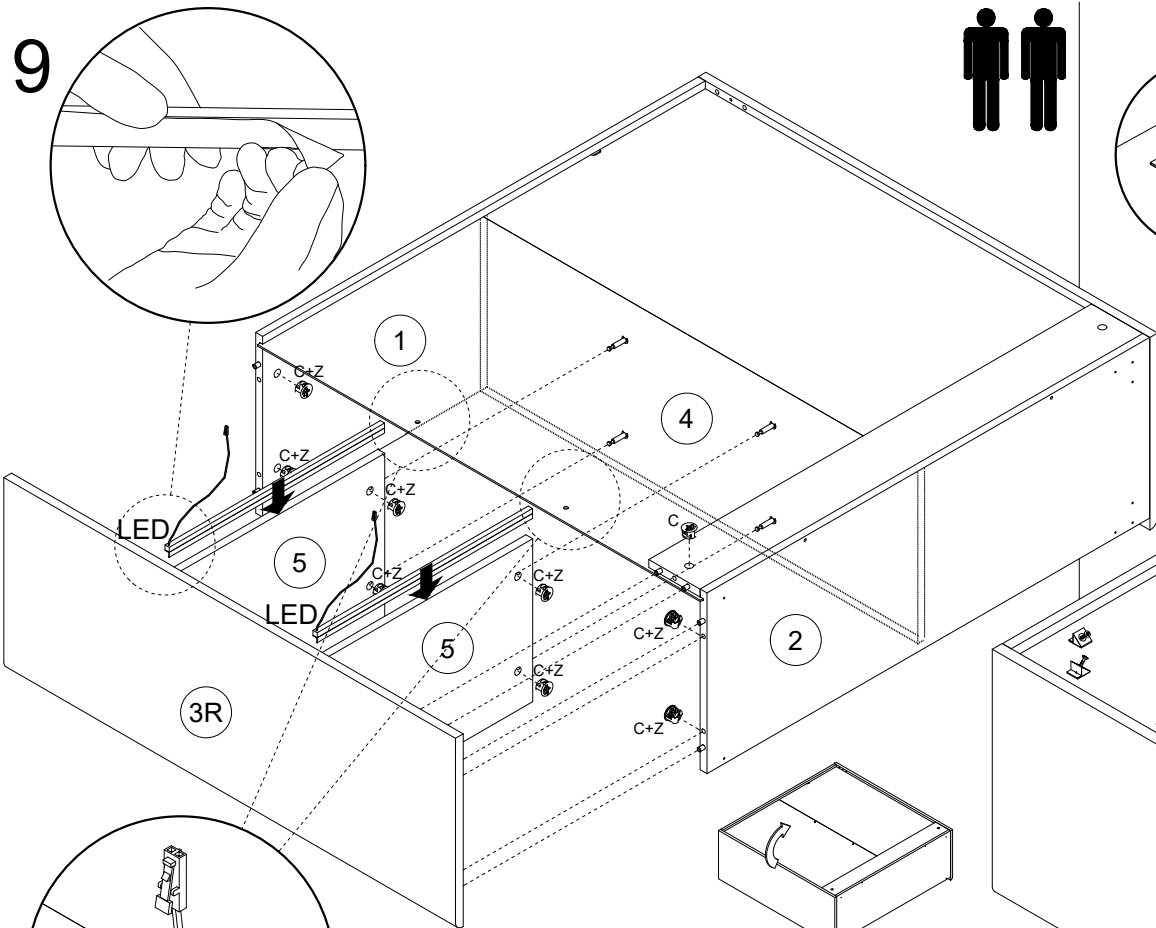
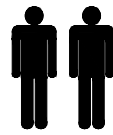
7



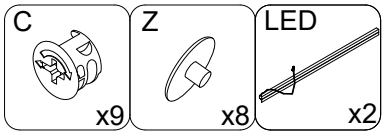
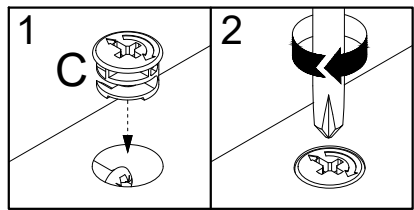
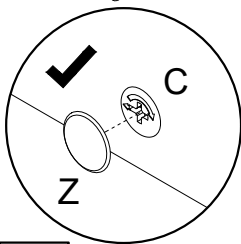
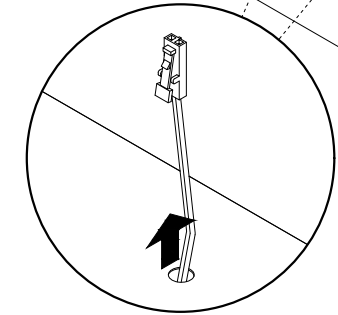
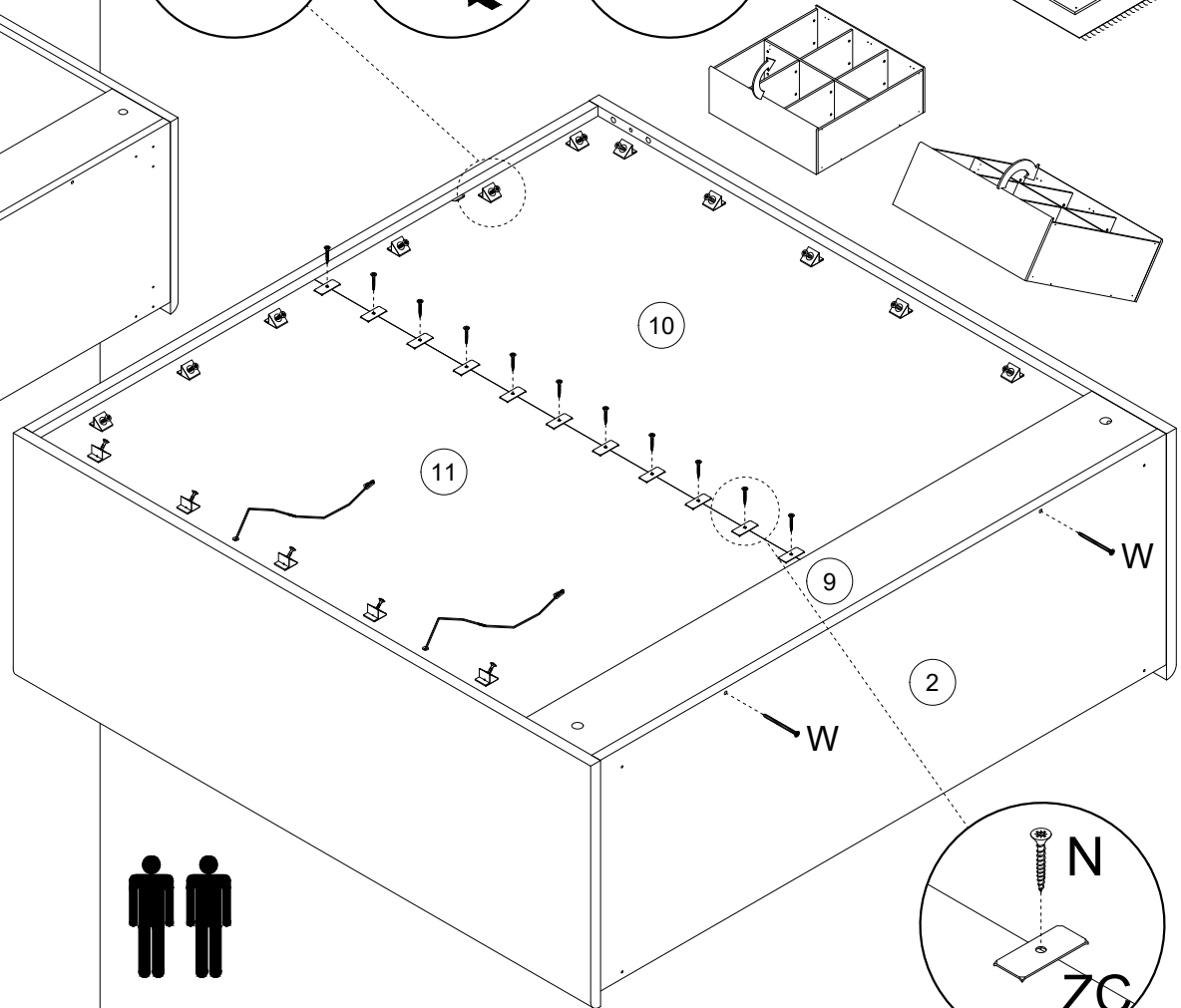
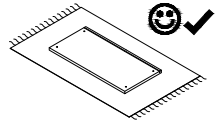
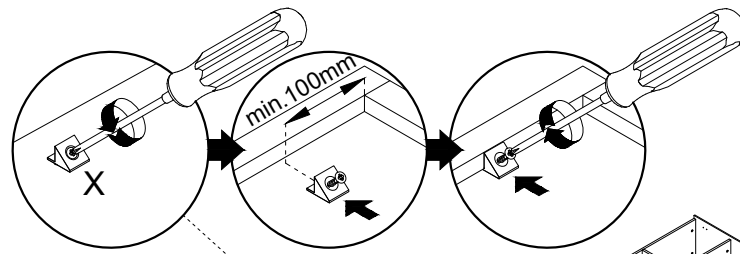
8



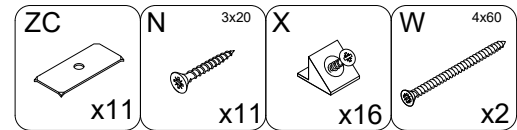
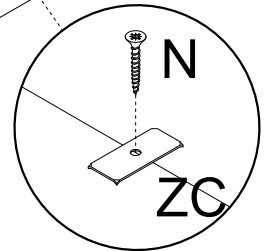
9



10

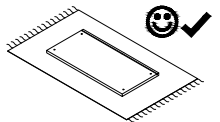
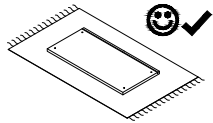
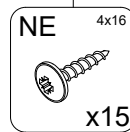
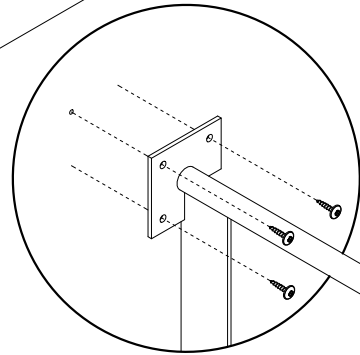
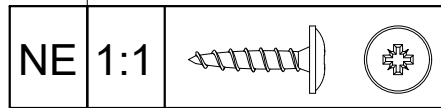
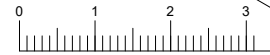
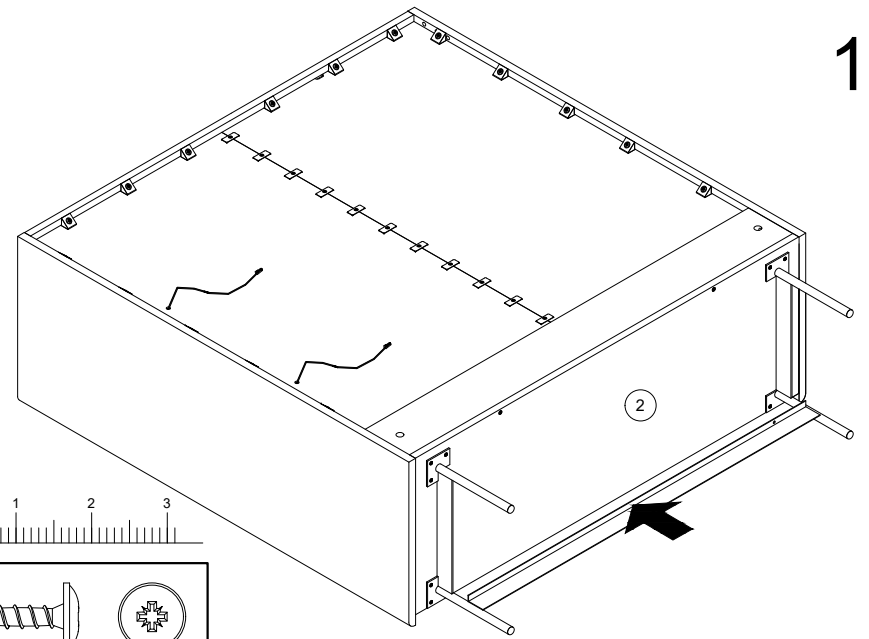
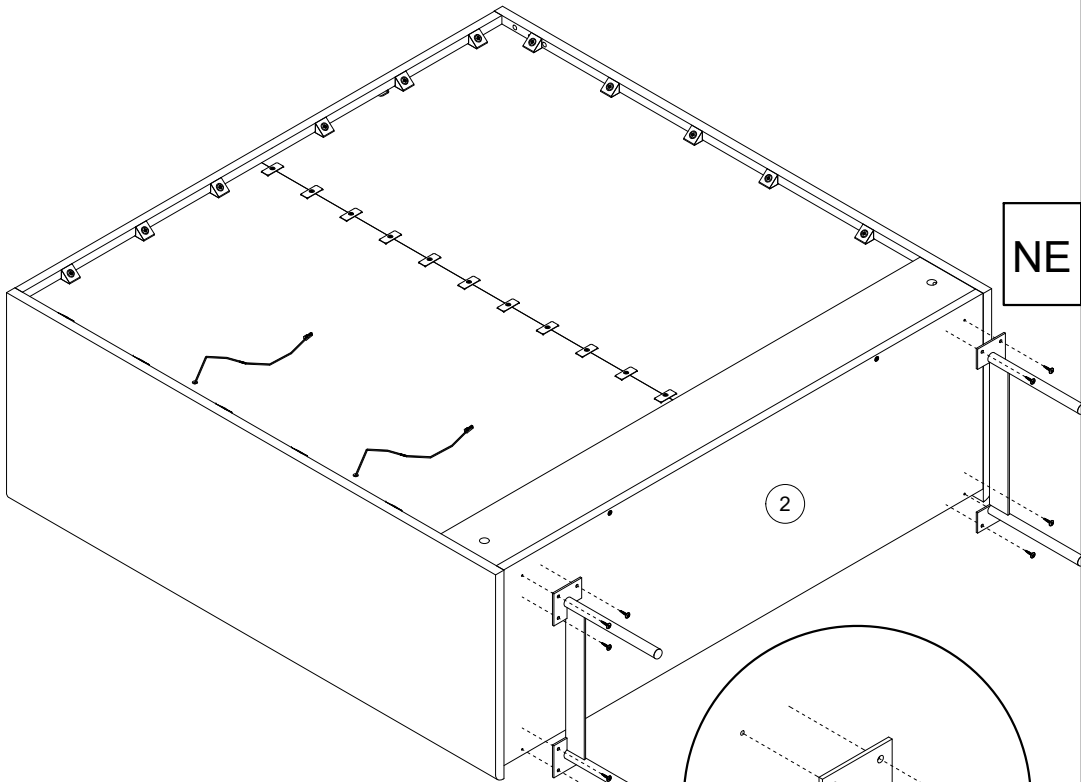


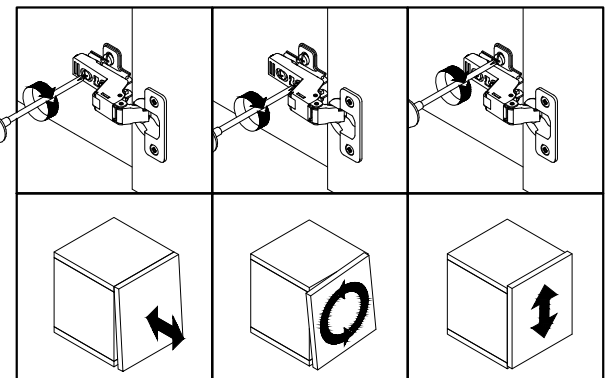
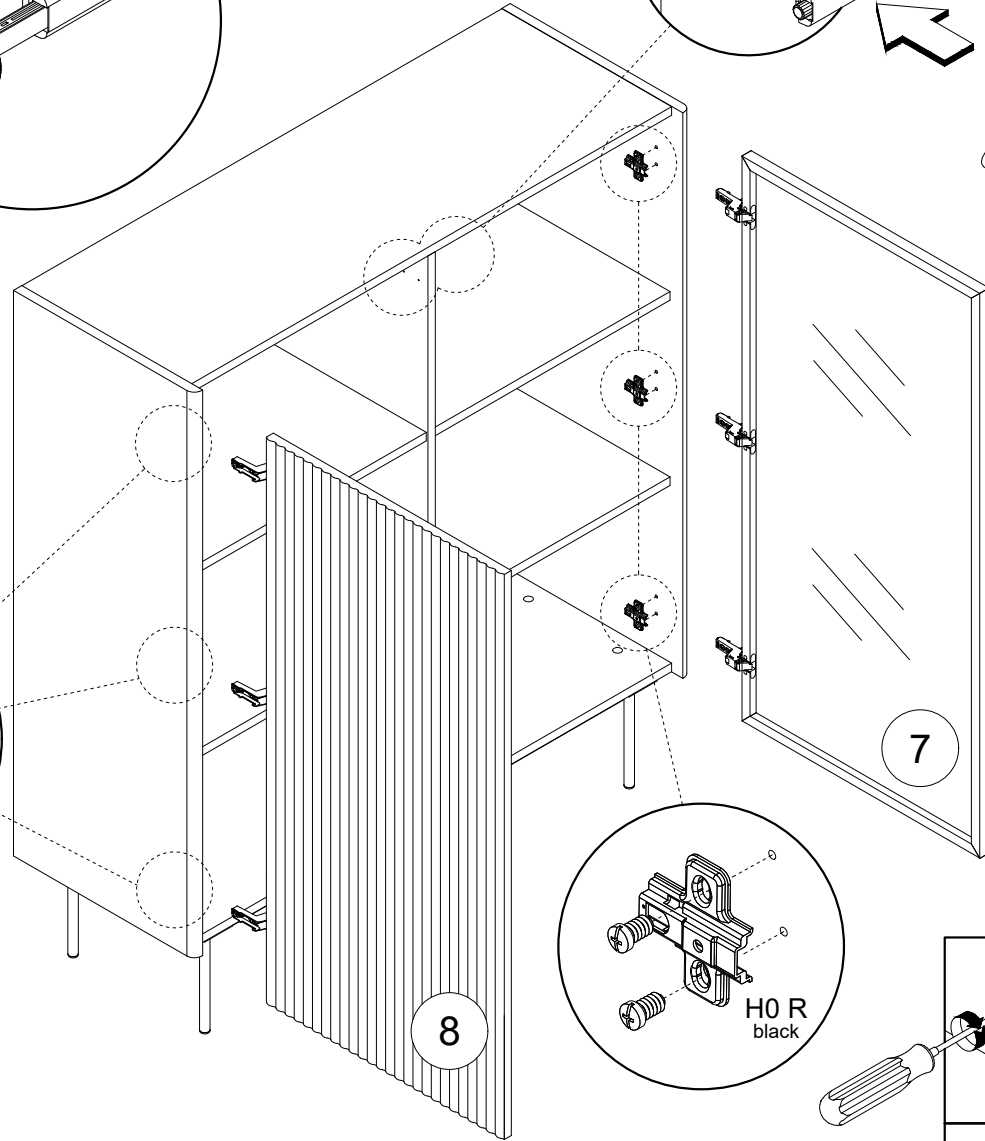
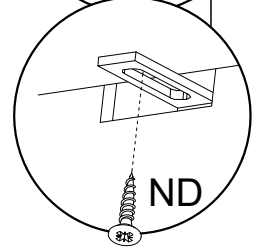
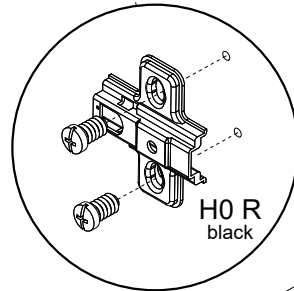
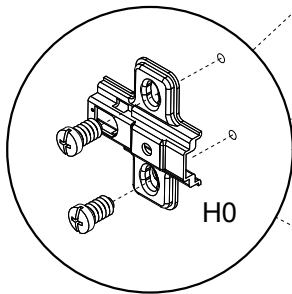
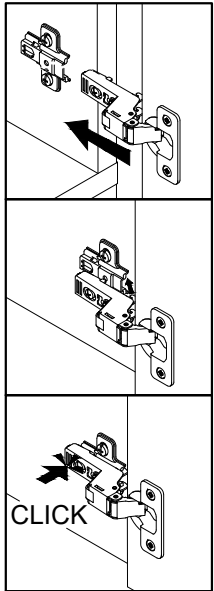
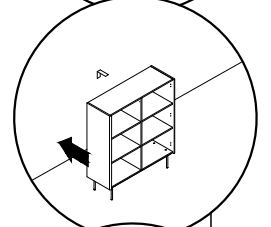
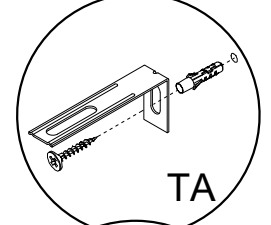
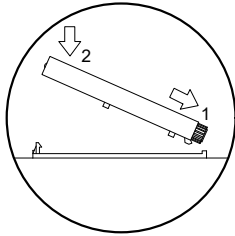
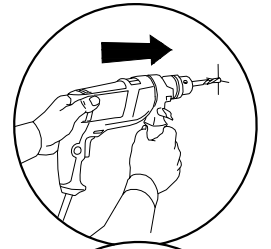
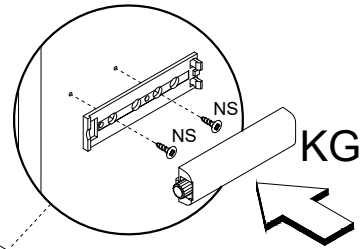
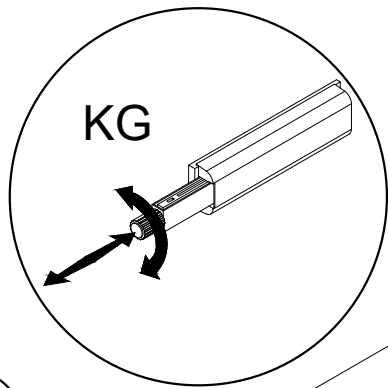
| | | | |
|---|-----|--|--|
| W | 1:1 | | |
| N | | | |
| | 1:1 | | |

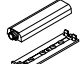




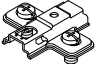


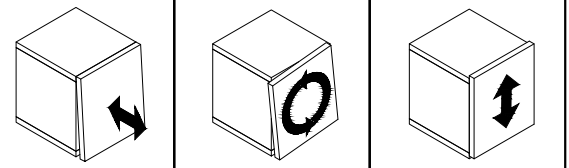
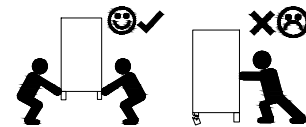
11

12

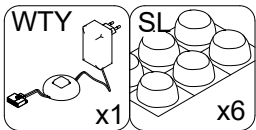
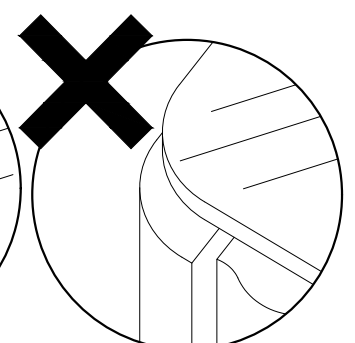
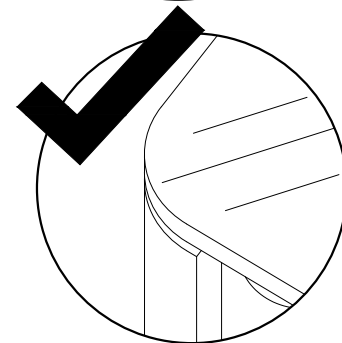
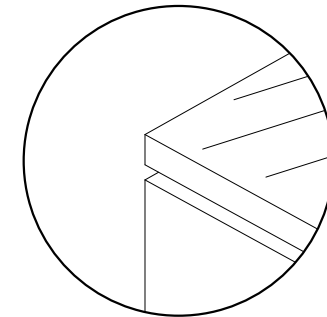
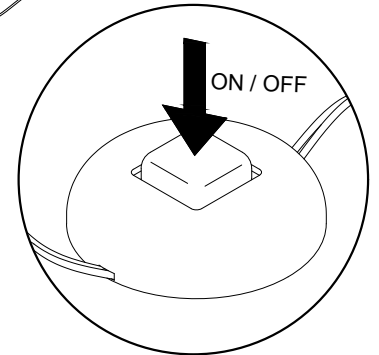
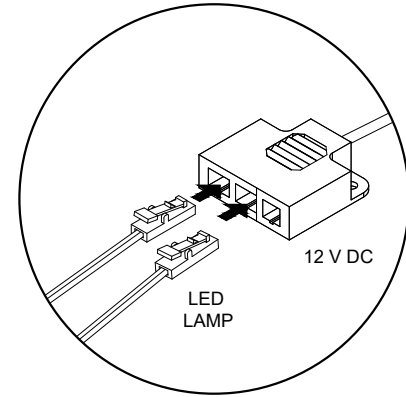
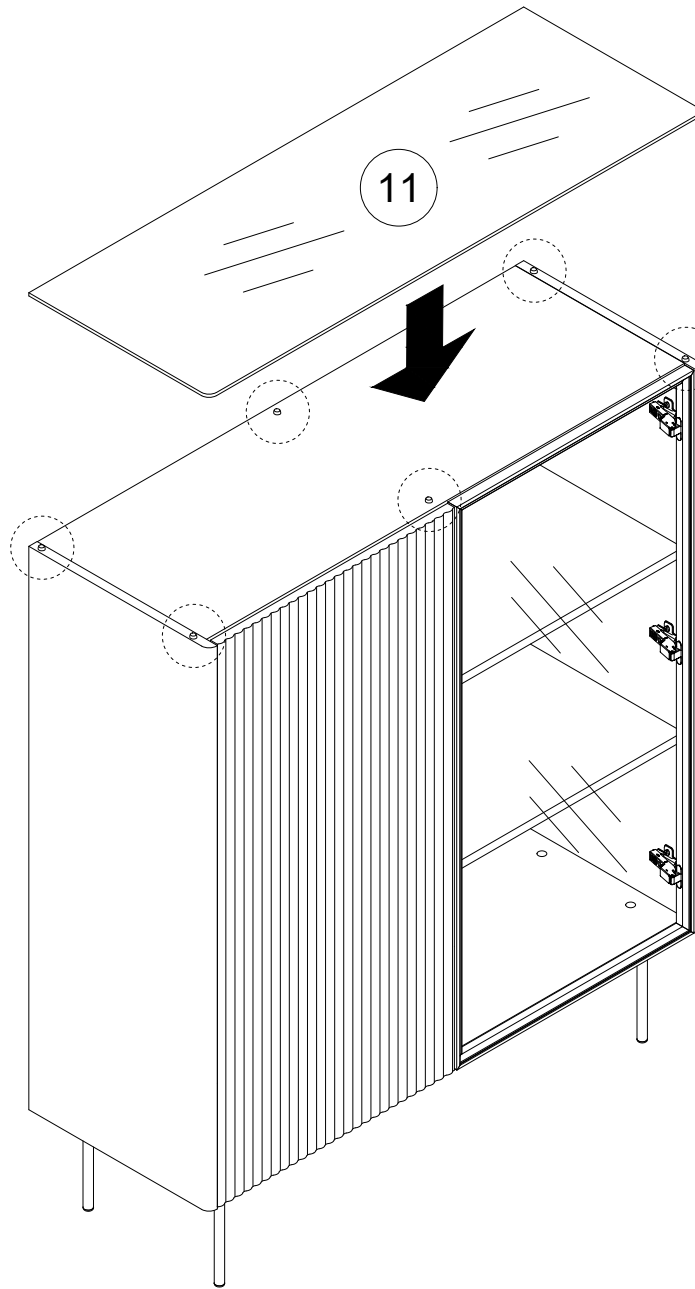
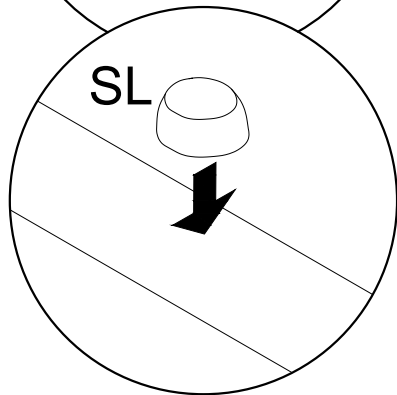
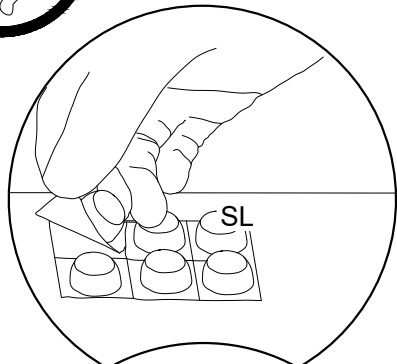




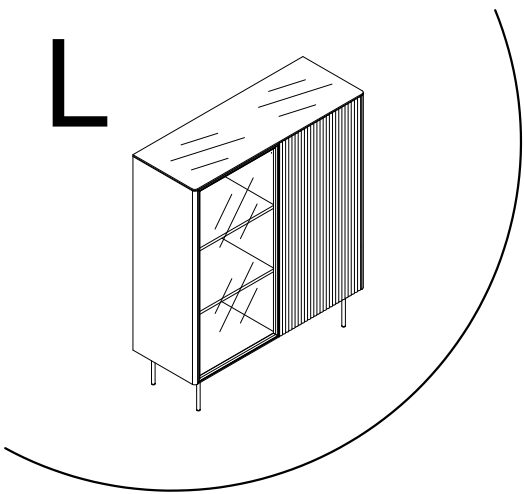
- KG** TITUS

 x2
- NS** 3,5x13

 x4
- TA**

 x1
- ND** 3,5x16

 x1
- H0 R BLACK**

 x3
- H0**

 x3



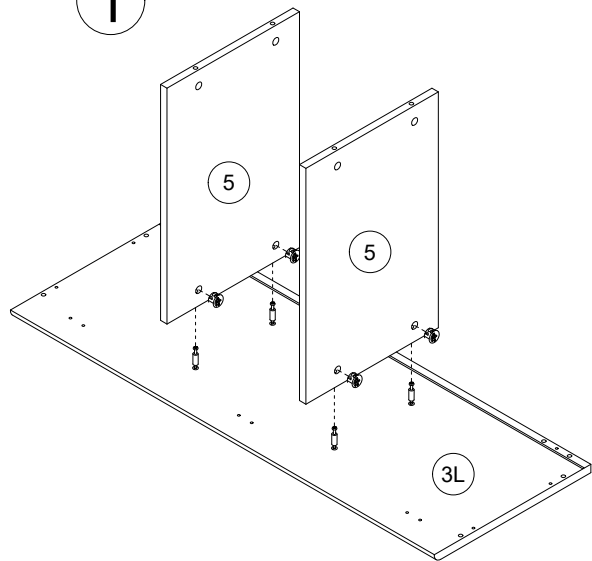
14



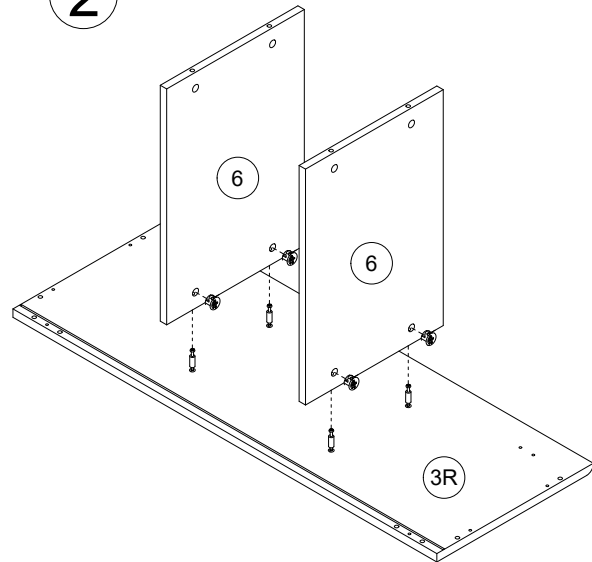
L



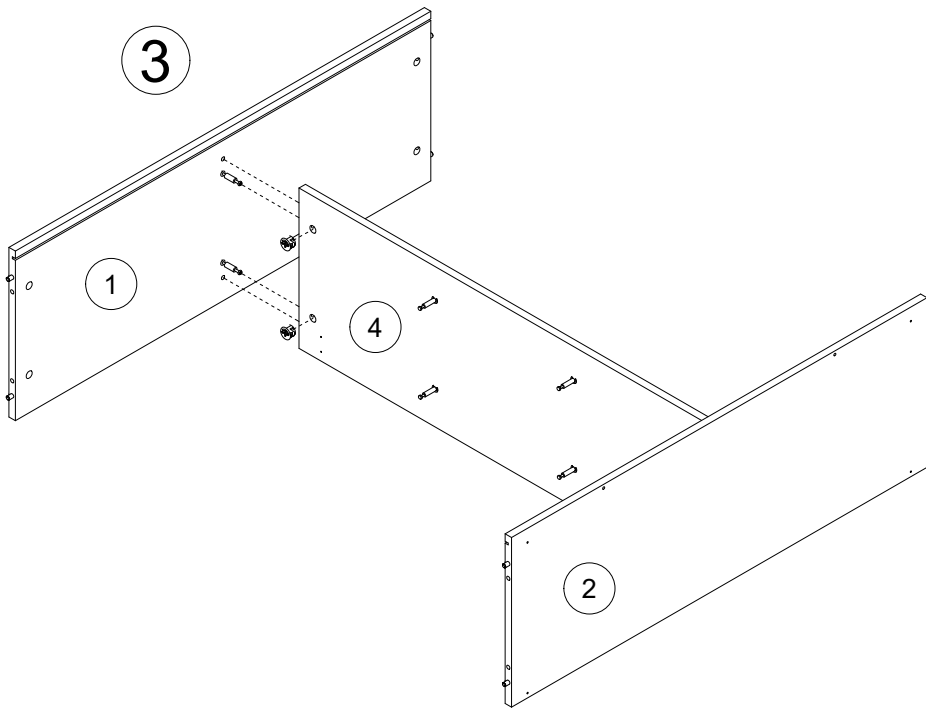
1



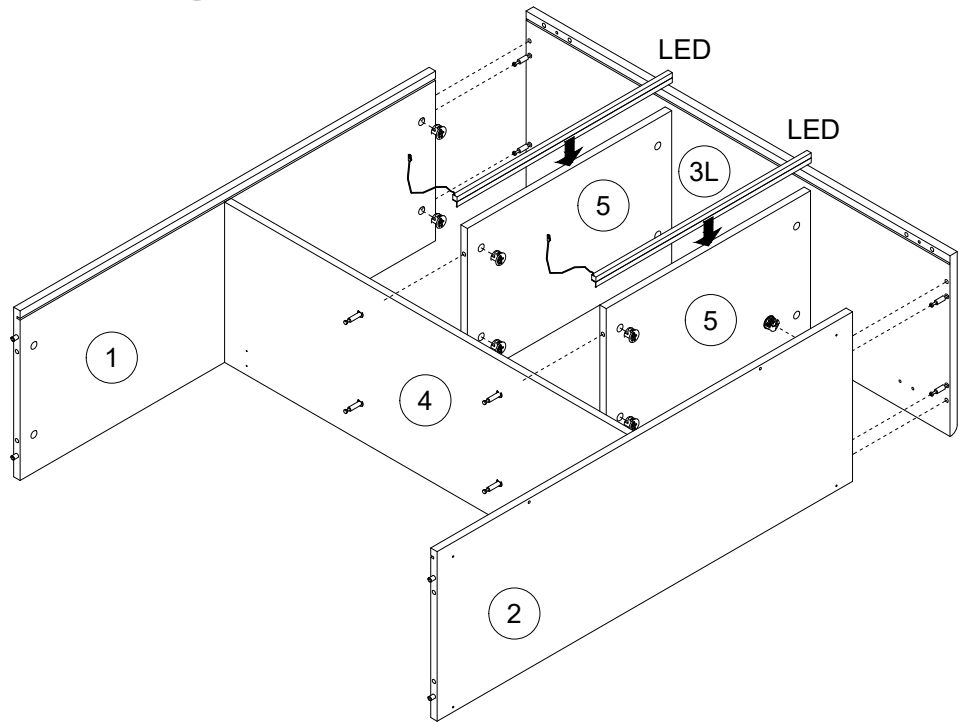
2



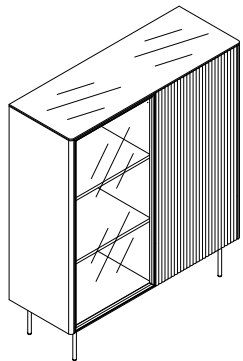
3



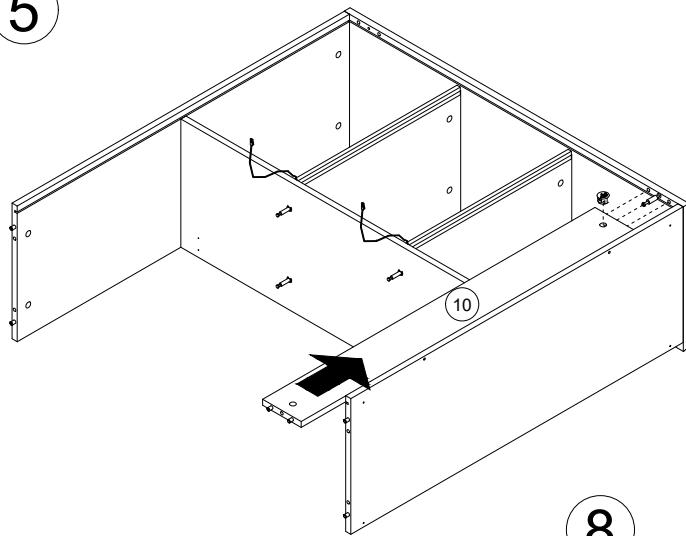
4



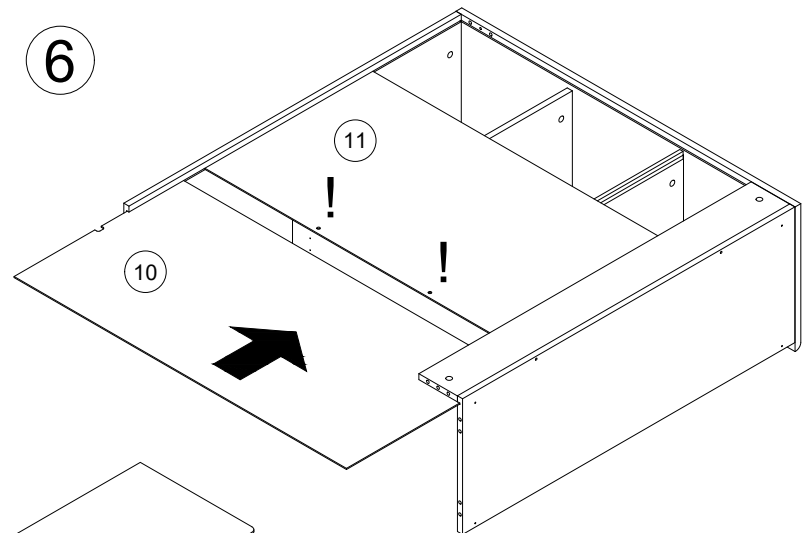
L



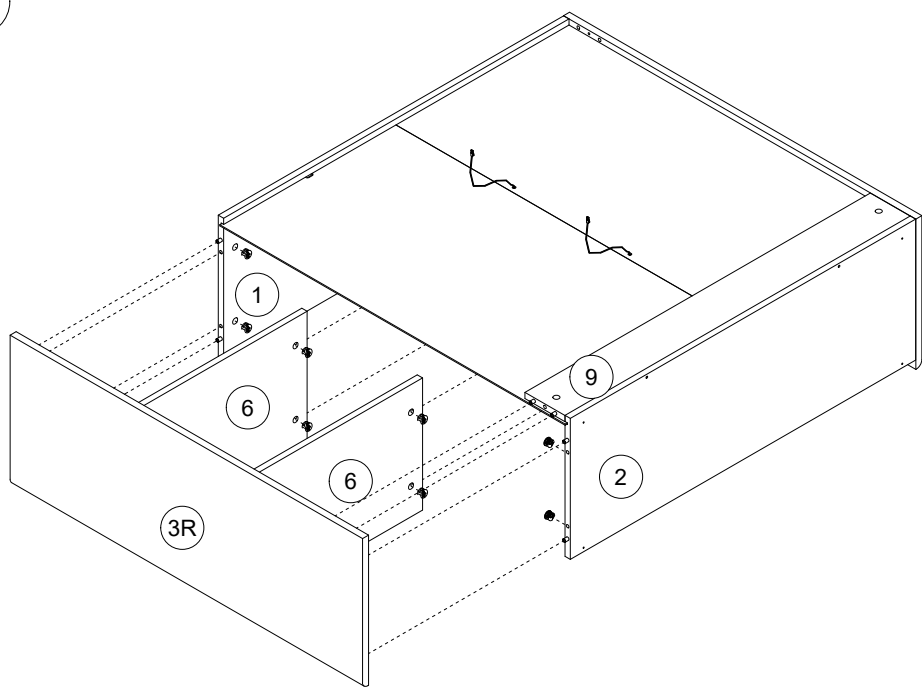
5



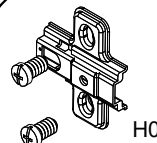
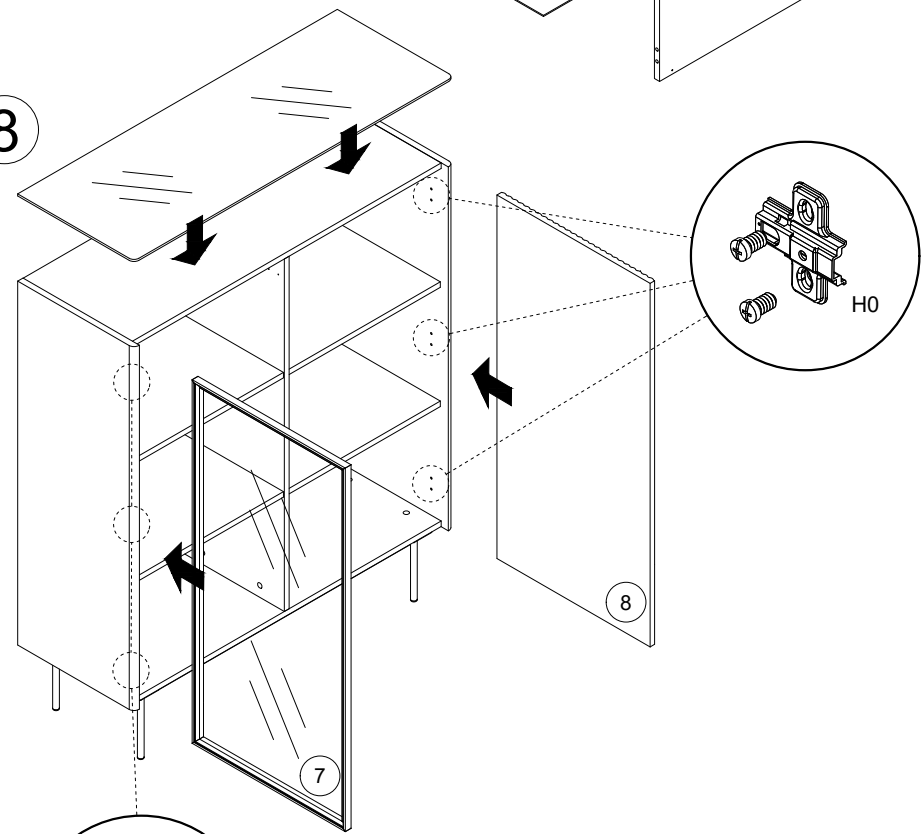
6



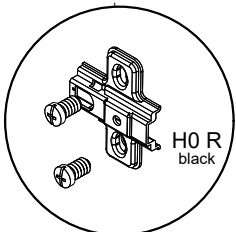
7



8



H0



H0 R
black